



# “Use of Moodle for Teaching and Learning”

By

**Dr. Ramesh R. Manza**

Department of Computer Science and IT,

Dr. Babasaheb Ambedkar Marathwada University, Aurangabad.



# Outline

- Who is Moodle?
- Why Moodle?
- Moodle Installation
- Features of Moodle
- Moodle for Faculty
- Advantages
- Support



# “Who” is Moodle?

Moodle that is the acronym for

**Modular**  
**Object-**  
**Oriented**  
**Dynamic**  
**Learning**  
**Environment**

it's an online **Learning Management System** (LMS).



# Why Moodle?

It runs on almost all platform, supporting a lot of useful function and customization, thanks to his

**modular structure.**

Upcoming Events

There are no upcoming events

[Go to calendar...](#)  
[New Event...](#)

Recent Activity

Activity since Wednesday, 21 January 2009, 09:39 PM

[Full report of recent activity...](#)

Nothing new since your last login

It's free!

Search Forums

[Advanced search](#) ?

Latest News

[Add a new topic...](#)

18 Jan, 10:06  
Admin User  
Wednesday meeting  
[more...](#)  
[Older topics ...](#)

# Why Moodle?



- Also, it's available in **78 languages!**
- It is used all over the world by teachers and educators and it's probably **the best E-Learning tool** in the net!





# Who is Moodle's Dad?



**Martin Dougiamas**

- Moodle was created by **Martin Dougiamas**, who wrote the entire code in PHP, as a research for his doctorate at Curtin University in Australia.
- In the beginning the “**M**” on Moodle acronym was the first letter of Dougiamas name, Martin.



# What teachers can do with Moodle...

create  
online courses

open forums

divide students  
into classes

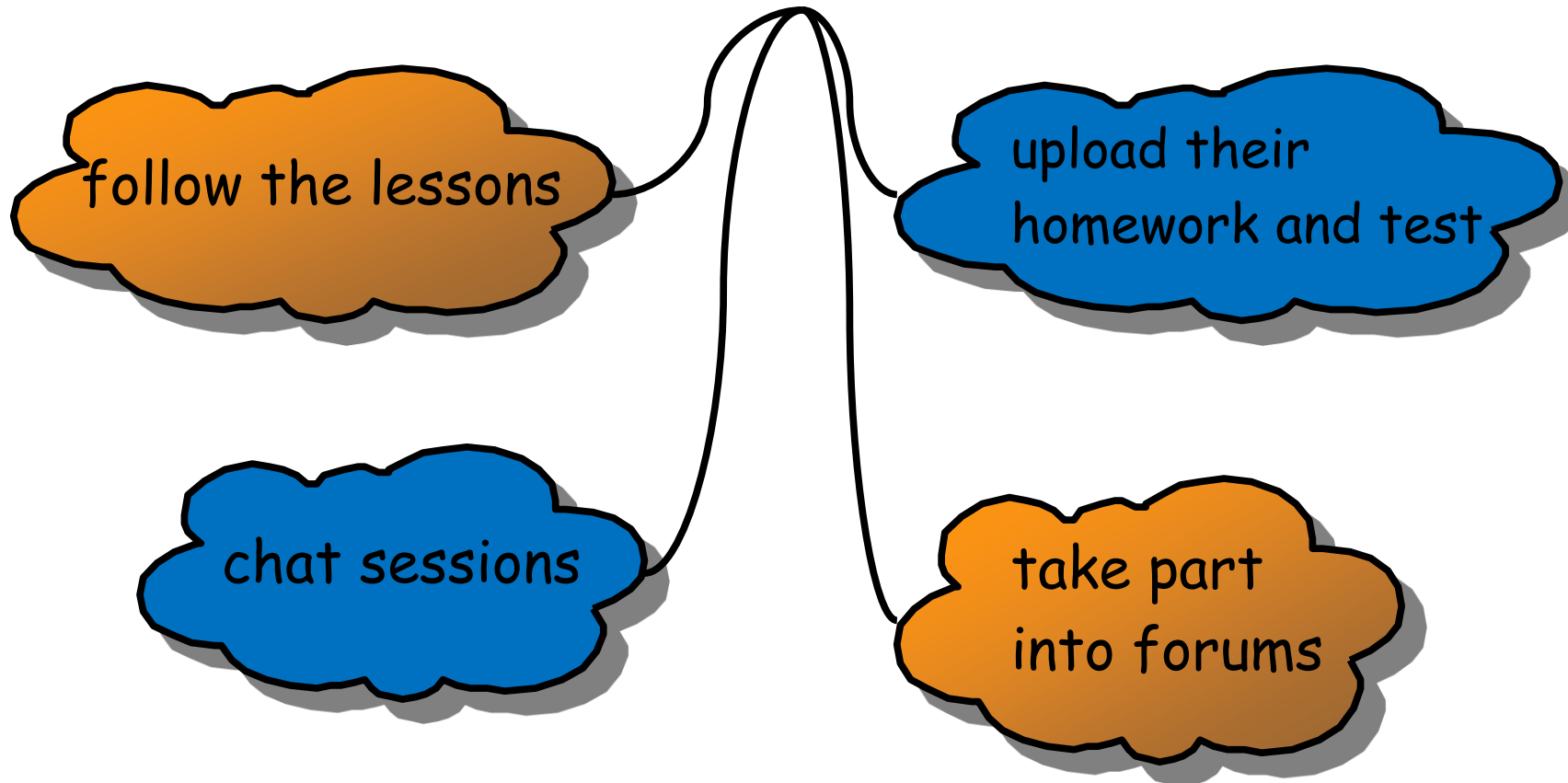
upload files  
and lessons

create online tests  
and examinations

chat sessions



# What students can do with Moodle...







# Moodle Installation



# Using XAMPP Server



- **X** (cross-platform) **A** (Apache HTTP Server) **M** (MySQL) **P** (PHP)  
**P** (Perl)
- XAMPP is fully functional web server package.
- It is built to test web based programs on a personal computer.
- It is not meant for online access via the web on a production server.



# Requirements

- Download the standard **Moodle** install package from Moodle.org
- Download the latest version of **XAMPP** from Apachefriends.org
- Install XAMPP
- Start XAMPP, which will start **Apache** and **MySQL**
- Confirm webserver is operating with the **browser**
- Unzip Moodle into the **htdocs** folder

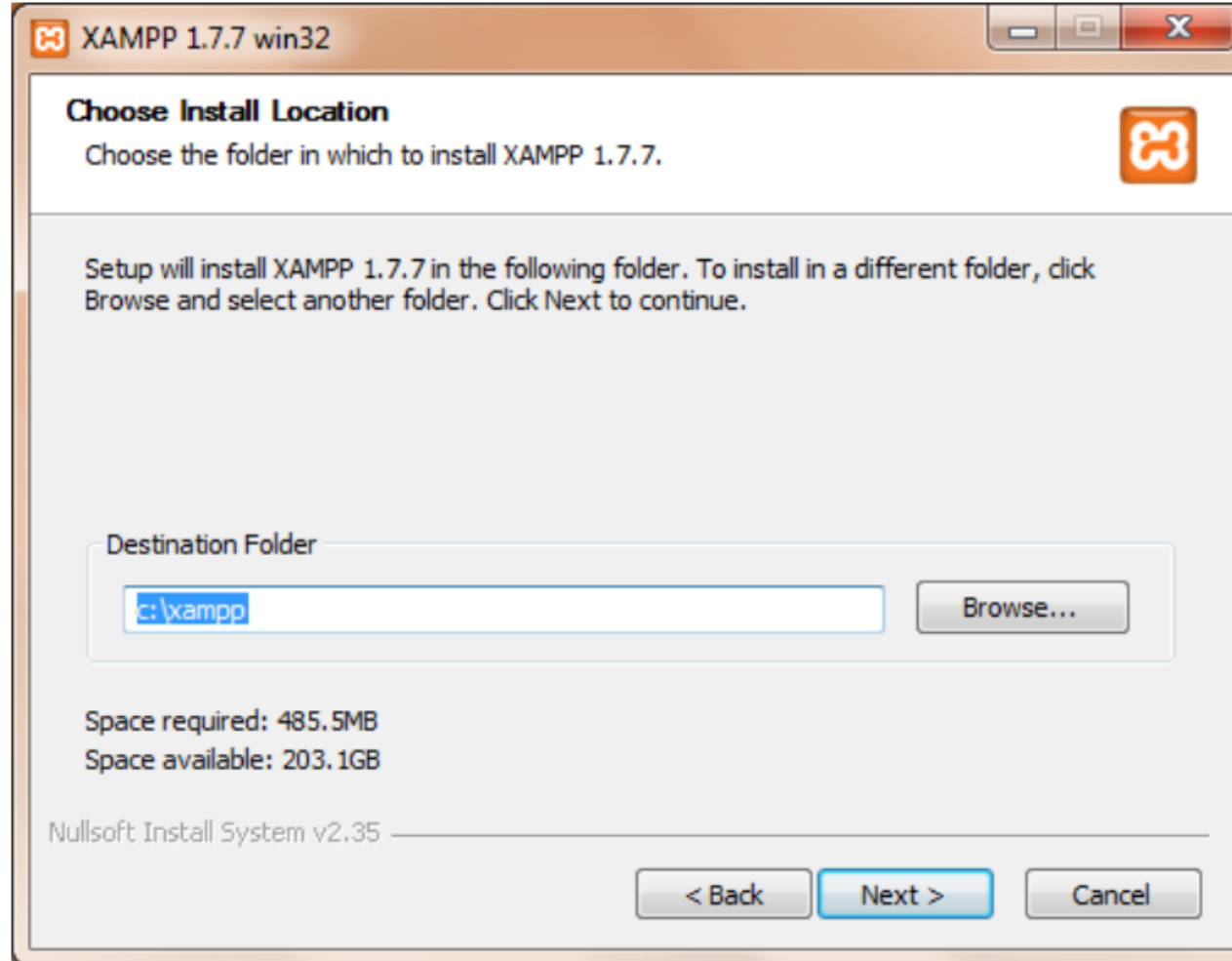


# Cont...

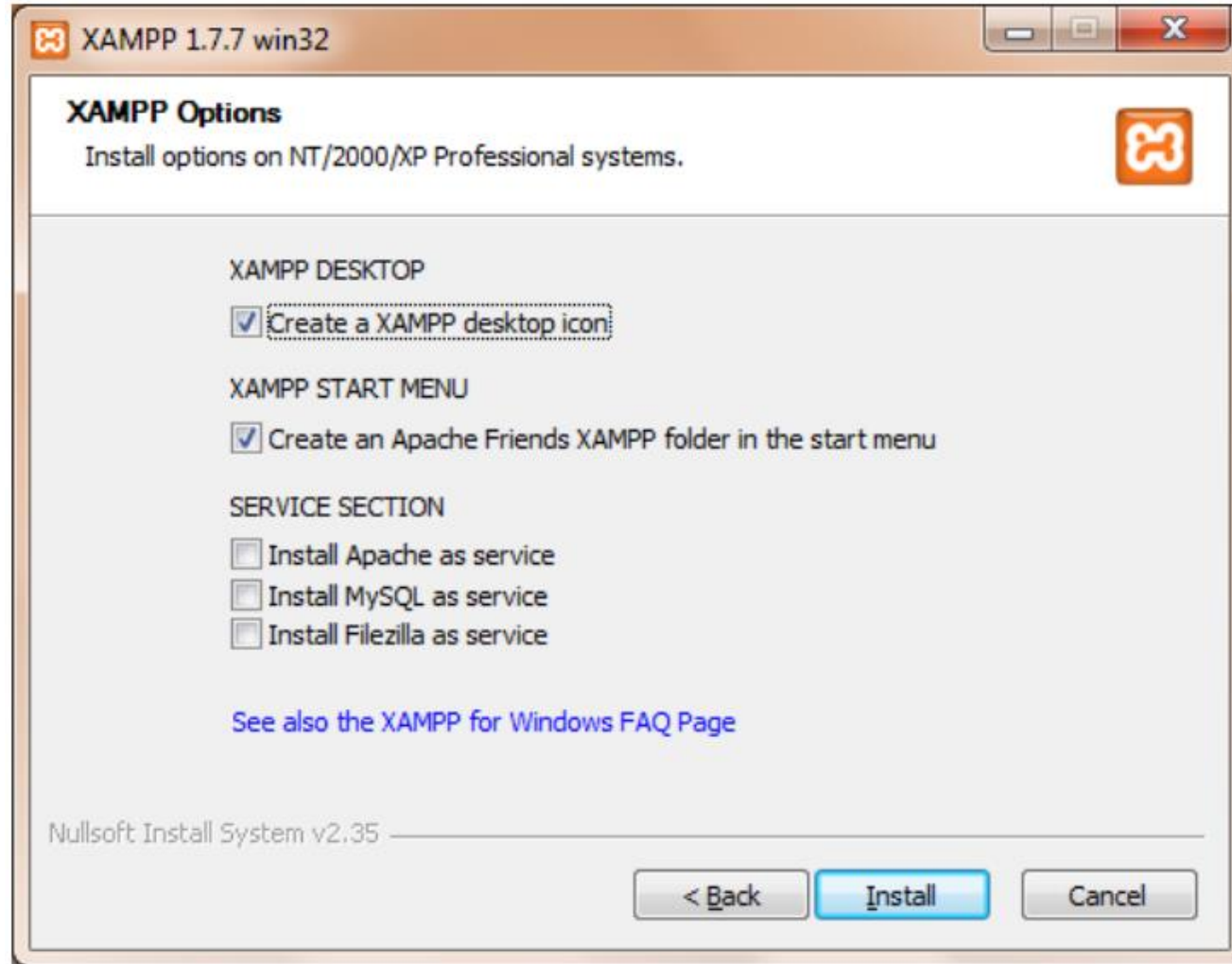
- Use browser to **navigate** to Moodle
- Install Moodle, perhaps pausing to **update** some configuration files
- Create **Admin** user and **Front Page** settings.



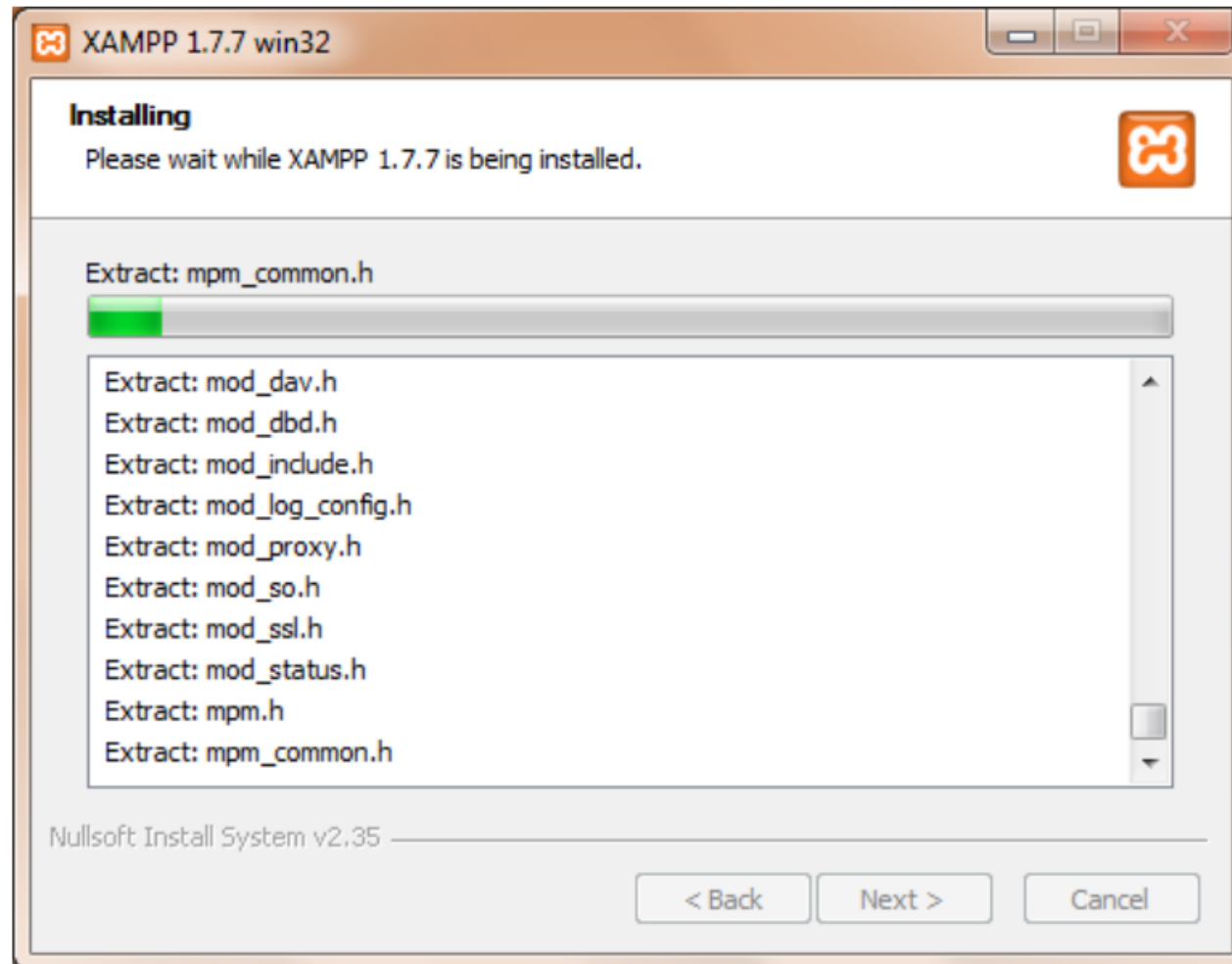
# Installing XAMPP

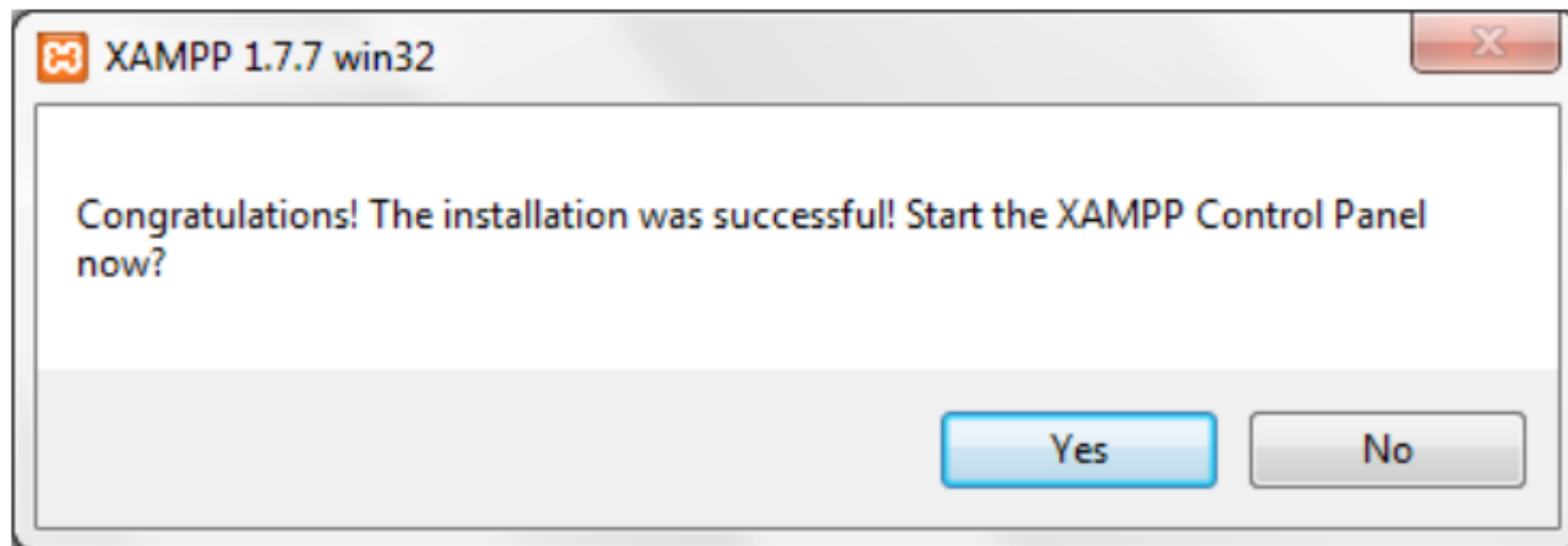


# Install Apache, MySQL, Filezilla Service



# Installing...

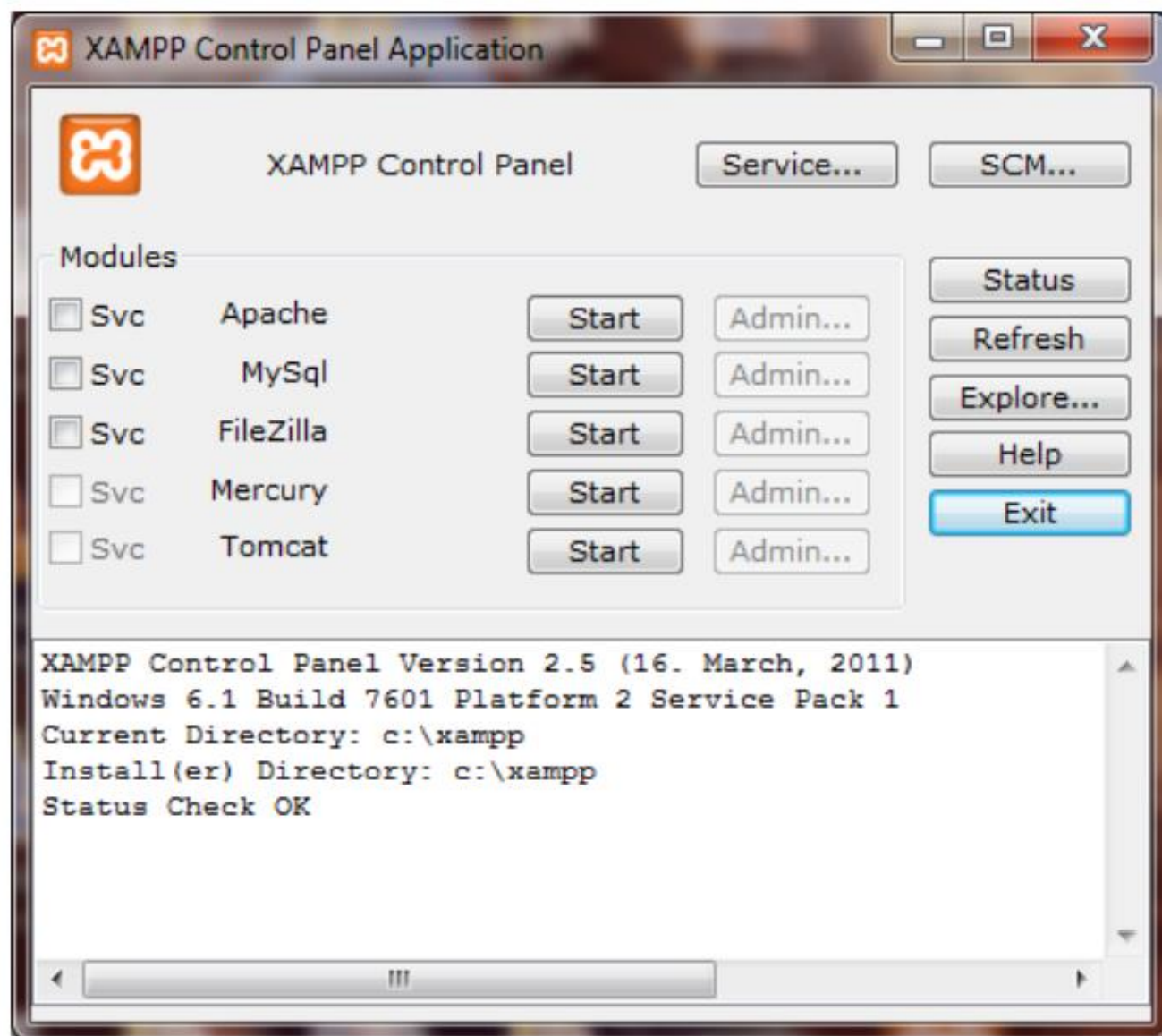








1. On the desktop, locate the shortcut XAMPP icon, double click on it, to launch the control panel.
2. In the folder where XAMPP has been installed, look for the XAMPP\_start, or XAMPP\_restart.
3. In the folder where XAMPP has been installed, look for the Apache start and MySQL start icons.





apache_start.bat	3	1 KB	MS-DOS Batch File
apache_stop.bat		1 KB	MS-DOS Batch File
filezilla_setup.bat		1 KB	MS-DOS Batch File
filezilla_start.bat		1 KB	MS-DOS Batch File
filezilla_stop.bat		1 KB	MS-DOS Batch File
mercury_start.bat		1 KB	MS-DOS Batch File
mercury_stop.bat		1 KB	MS-DOS Batch File
mysql_start.bat	3	1 KB	MS-DOS Batch File
mysql_stop.bat		1 KB	MS-DOS Batch File
passwords.txt		1 KB	Text Document
readme_de.txt		7 KB	Text Document
readme_en.txt		7 KB	Text Document
service.exe		60 KB	Application
setup_xampp.bat		1 KB	MS-DOS Batch File
Uninstall.exe		70 KB	Application
xampp_chkdll.exe		84 KB	Application
xampp_cli.exe	2	100 KB	Application
xampp_restart.exe		88 KB	Application
xampp_service_mercury.exe		72 KB	Application
xampp_start.exe		88 KB	Application
xampp_stop.exe		88 KB	Application
xampp-changes.txt		4 KB	Text Document
xampp-control.exe	1	144 KB	Application
xampp-portcheck.exe		142 KB	Application



# Install PHP curl Library

- Open the php.ini file found in the php/php.ini folder
- Find the line: ; extension=php\_curl.dll.
- Remove the ; at the beginning of the line.
- Restart Apache if necessary.



# Create the MySQL Database

- To create a MySQL database for the Moodle “site” use the phpMyAdmin utility included with XAMPP.
  - To access this launch the web browser, type <http://localhost/xampp> in the address bar.
  - The XAMPP default page will be displayed, click the link for preferred language, say English.
  - From the menu on the left, click on “phpMyAdmin”.



ADODB

## Tools

phpMyAdmin

Webalizer

PHP Switch



Mercury Mail



FileZilla FTP



- When phpMyAdmin has launched in the browser window, enter the name of database in the “Create new database”.






MySQL localhost

 **Create new database** 

 MySQL connection collation:  

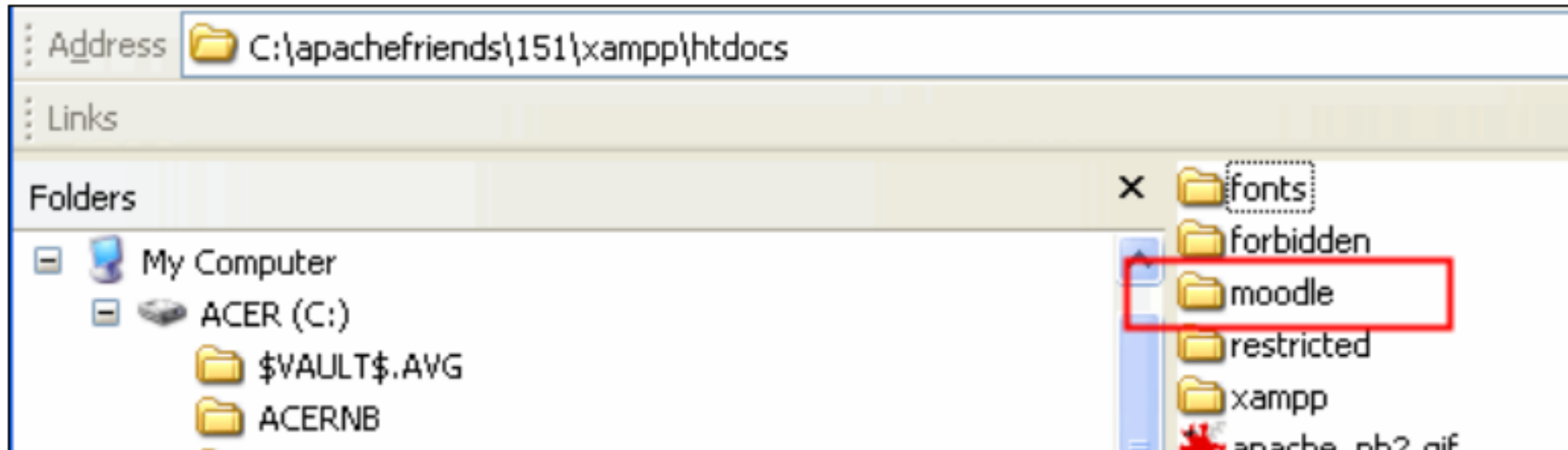


# MySQL Security

 Privileges		 Drop			
 Users having access to "moodle"					
User	Host	Type	Privileges	Grant	Action
root	127.0.0.1	global	ALL PRIVILEGES	Yes	
root	localhost	global	ALL PRIVILEGES	Yes	



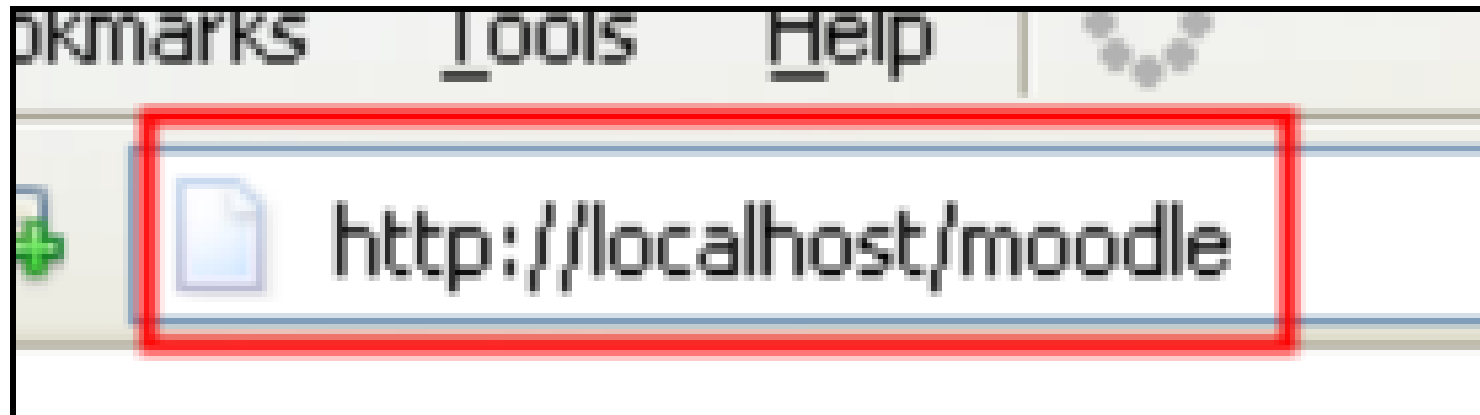
# Extract Standard Moodle Package Files






# Start of Initial Moodle Install

- In Web browser, type the path to the folder containing the Moodle files in the address bar.






# Choose a Language

bookmarks Tools Help | 

 http://localhost/moodle/install.php



## Installation

Choose a language

Language

Next »



# Diagnostic Report



## Installation

Checking your PHP settings ...

PHP version	Pass
Session Auto Start	Pass
Magic Quotes Run Time	Pass
Insecure Handling of Globals	Pass
Safe Mode	Pass
File Uploads	Pass
GD version	Pass
Memory Limit	Pass

[« Previous](#) [Next »](#)



# Path for Moodle Installation



## Installation

Please confirm the locations of this Moodle installation.

**Web Address:** Specify the full web address where Moodle will be accessed. If your web site is accessible via multiple URLs then choose the most natural one that your students would use. Do not include a trailing slash.

**Moodle Directory:** Specify the full directory path to this installation. Make sure the upper/lower case is correct.

**Data Directory:** You need a place where Moodle can save uploaded files. This directory should be readable AND WRITEABLE by the web server user (usually 'nobody' or 'apache'), but it should not be accessible directly via the web.


**Web address**

**Moodle Directory**

**Data Directory**



# MySQL Database Settings



## Installation

Now you need to configure the database where most Moodle data will be stored. This database must already have been created and a username and password created to access it.

**Type:** mysql or postgres7  
**Host:** eg localhost or db.isp.com  
**Name:** database name, eg moodle  
**User:** your database username  
**Password:** your database password  
**Tables Prefix:** optional prefix to use for all table names

**Type**

**Host Server**

**Database**

**User**

**Password**

**Tables prefix**



# Server Checks

Server Checks			
Name	Information	Report	Status
		<p><b>i</b> should be installed and enabled for best results</p>	
php_extension	curl	<p>Installing the optional cURL library is highly recommended in order to enable Moodle Networking functionality.</p>	Check
		<p><b>i</b> should be installed and enabled for best results</p>	
php_extension	openssl	<p>Installing the optional OpenSSL library is highly recommended – it enables Moodle Networking functionality.</p>	Check
unicode		<p><b>i</b> must be installed and enabled</p>	OK
database	mysql	<p><b>i</b> version 4.1.16 is required and you are running 5.1.33</p>	OK
php		<p><b>i</b> version 4.3.0 is required and you are running 5.2.9</p>	OK

# Moodle Install Confirm



## Installation

Configuration completed

config.php has been successfully created

[Continue »](#)



## Moodle Demonstration Site

Welcome! This site is for you to try using the most recent stable released version of Moodle and to explore some courses which demonstrate a few of Moodle's many features. (More demo courses are coming soon!)

Here are some demo accounts for you to use:

Admin - username "admin", password "demo"

Teacher - username "teacher", password "demo"

Student - username "student", password "demo"

The database and files are erased and restored to a clean state every hour on the hour, so don't worry if you make a mess.

Also note that you might not be the only person using one of the demo accounts at the same time, so you may see unexpected things happen occasionally.

 [SV&V Carrier Training](#)

## Corsi disponibili

### Monitoraggio2009

Teacher: *Ramesh Manza*

### Higher Education Film Studies Module

Teacher: *Ramesh Manza*

This course explores the tensions between technology and culture as represented in popular film. It ran as an e-learning Module for the University of Southern Denmark in March 2005, delivered by Dr. Deneka MacDonald, and is now being used, with Denmark's permission, as a demonstration module. Artwork for the course is courtesy of Alex Ronald, Judge Dredd & 2000 AD Copyright © Rebellion A/S 2004.



## Login

Username

Password

Login

[Inizia adesso a creare un nuovo account](#)  
[Dimenticata la password?](#)

## Utenti collegati

(ultimi 5 minuti)

-  [Teacher Demo](#)
-  [Admin User](#)
-  [Sam Student](#)
-  [Utente ospite](#)

## Moodle Announcements



[New system administrator for moodle.org](#)

[Introduction to Moodle Programming](#)

[Moodle.org has a new look for 2009!](#)

[Job offered at Moodle HQ](#)

[SCORM module improvements](#)

[Sito sorgente...](#)



# Features of Moodle

# Features



**Forum:** you can discuss with all other registered user about many issues.

## Social forum - latest topics

[Subscribe to this forum](#)

[Add a new discussion topic](#)



### Christmas thoughts

by [Marcello Missiroli](#) - Sunday, 21 December 2008, 09:18 AM

Hi everyone!

Besides wishing everyone a very good Christmas, I would like to tell you what's up with the project.

\* Videoconferencing. We had a lot of trouble with that, as you might have noticed. Essentially, for unknown reasons, we knocked out the service for the whole **region** for **2 weeks**. As a result, videoconferencing is now off-limits for us for a long long time.

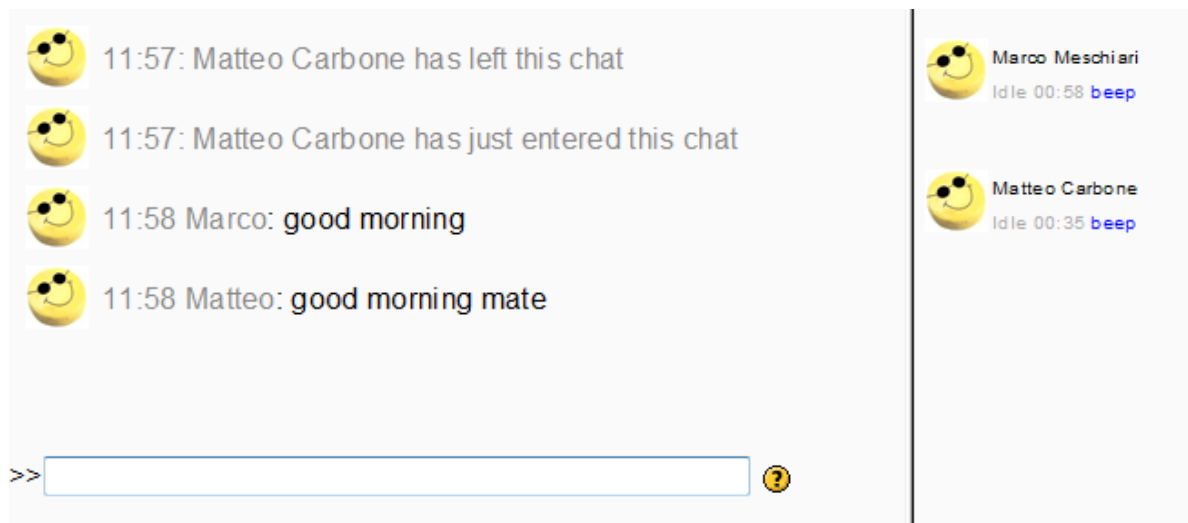
[Read the rest of this topic](#) (155 words)...

[Discuss this topic](#) (0 replies so far)

# Features



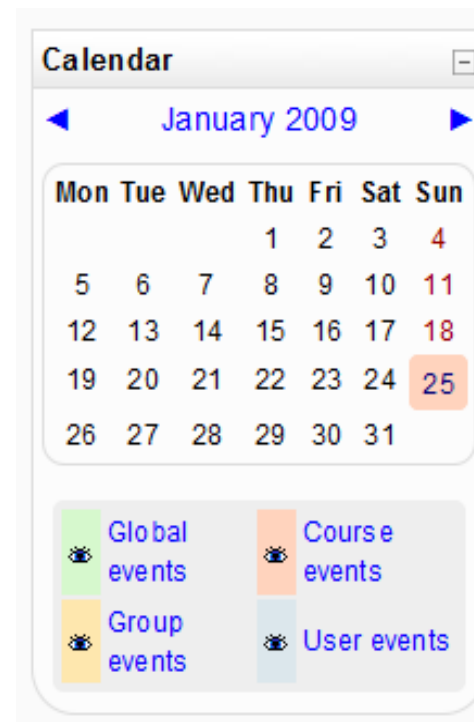
**Chat:** you can talk about what you want in real time with classmate and professor.



# Features



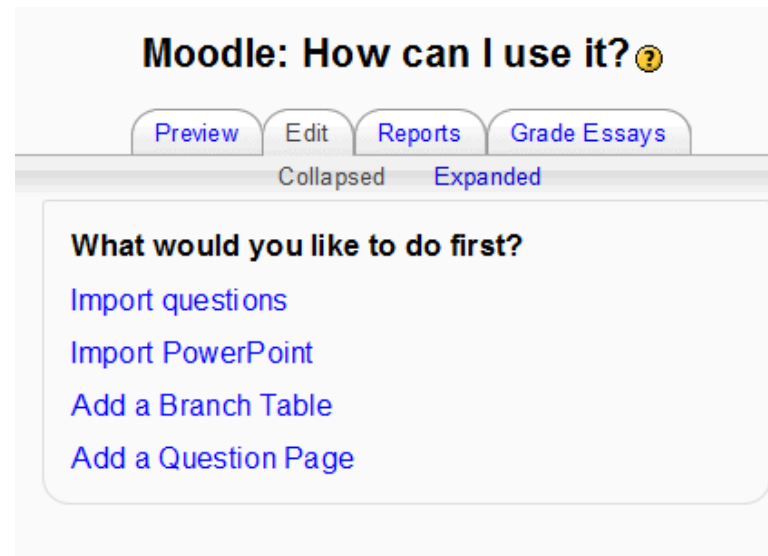
**Calendar:** if you're a professor, you can program lessons, tests and more. Students can consult this section as a reminder for future commitments.





# Features

**Lesson:** Moodle provides teacher many ways to set up their own lessons and courses and to keep them under control.





# Features

**Wiki and Glossary:** collaboration is the key word of moodle, which has several functions to work in group.

Search   Search full text

[Add a new entry](#)

[Browse by alphabet](#) [Browse by category](#) [Browse by date](#) [Browse by Author](#)

---

Browse the glossary using this index

[Special](#) | [A](#) | [B](#) | [C](#) | [D](#) | [E](#) | [F](#) | [G](#) | [H](#) | [I](#) | [J](#) | [K](#) | [L](#) | [M](#) | [N](#) | [O](#)  
[P](#) | [Q](#) | [R](#) | [S](#) | [T](#) | [U](#) | [V](#) | [W](#) | [X](#) | [Y](#) | [Z](#) | [ALL](#)

---

Page: [1](#) [2](#) [3](#) (Next)  
[ALL](#)

**A**

---


**Artificial Intelligence**  
by [Deneka MacDonald](#) - Tuesday, 24 June 2008, 02:19 AM

Artificial Intelligence (or AI), also known as machine intelligence, is defined as intelligence exhibited by anything manufactured (i.e.


# Features



**Quizzes and Tests:** there are many ways to evaluate the preparation of the students.. or to have fun with questions of any arguments!

1 

Marks: --/1

Listen to this greeting: 

What language is being spoken?

Choose one answer.

- a. Spanish
- b. German
- c. English
- d. French



# Features



...and more!

Moodle has got really many functions! And they are all easily manageable.

A screenshot of the Moodle course interface. The main content area is titled "Topic outline" and contains a "Welcome to the Moodle Features Demo Course" message. Below this, there are two sections: "1 Assignments" and "2 Chats". The "Assignments" section lists several activities: "Upload a single file", "Advanced uploading of files", "Online text", "Offline activity", and "Assignment module documentation". The "Chats" section states that the chat module allows for real-time synchronous discussion. On the left side, there are three sidebar boxes: "Course Download" with a link to Moodle 1.9.3 Features Demo course backup, "People" with a link to Participants, and "Activities" with a list of modules including Assignments, Chats, Choices, Databases, Forums, Glossaries, Lessons, and Quizzes. On the right side, there are three sidebar boxes: "Latest News" with a link to Add a new topic... and a news item from 14 Nov, 22:31 by Teacher Demo; "Upcoming Events" with a message that there are no upcoming events; and "Recent Activity" with a link to Full report of recent activity... and a timestamp of 24 January 2009, 03:53 AM.

# Let's Try!



- And now, after all this chatting, it's time to **work!**
- Let's enter the world of Moodle, and try to answer to a **simple quiz!** We are going to learn how to do it step by step;
- **First of all** we must be registered in Moodle. If we are, we should only login from the panel in the top of the page

You are not logged in. ([Login](#))  
English (en) ▾

**Returning to this web site?**

Login here using your username and password  
(Cookies must be enabled in your browser) ?

Username   
Password

---

Some courses may allow guest access

---

Forgotten your username or password?



# Let's Try: Quiz

- Now we should **select the quiz** from the right page of our moodle website.

Weekly outline

First steps

News forum

Presentation

**Nations and Flags**

23 January - 29 January

Jump to...

- Then, **check** that the quiz is the one we want; select it through the button **“Attempt quiz now”**!

Nations and Flags

Do you recognize all?

Grading method: Voto più alto

Attempt quiz now



# Quiz: Flags and Nations

- The first question! Can you tell me what's **the right answer**?
- Yeah, that's **India's flag**!
- So, we select it, and then we press the **Submit** button!

1 Which nation has this flag?  
Marks: -/1



Choose one answer.

- a. Czech Republic
- b. Hungary
- c. Italy
- d. Belgium
- e. **India**
- f. Finland

Submit

Choose one answer.

- a. Czech Republic
- b. Hungary
- c. Italy
- d. Belgium
- e. **India** ✓
- f. Finland

Submit

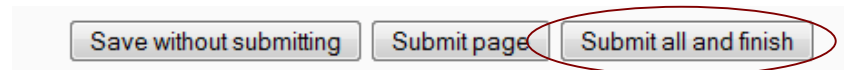
**Correct**  
Marks for this submission: 1/1.

Moodle confirms our answer.. we have collected **1 mark**!

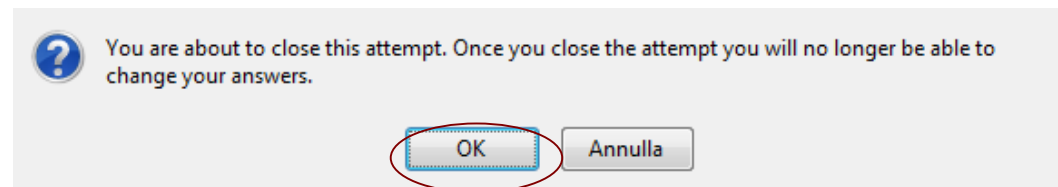
# Quiz: Flags and Nations



- In the **same way**, we can complete the entire quiz!
- Alternatively, we can select all the answers, and then press the button “**Submit all and finish**” at the end of the page



- to confirm our choices **all in one time**.
- A **dialog box** will appear to make sure we have selected the desired answers; **press ok**, and go to the **results**!





# Flags and Nations: Results

- **Finally**, we are arrived at the **results page**! Here we can take a look at our performance, with some statistical information;

		Start again
Started on:	Tuesday, 27 January 2009, 06:28 PM	} → Time Information
Completed on:	Tuesday, 27 January 2009, 06:29 PM	
Time taken:	1 min 9 secs	
Raw score:	6/6 (100 %)	} → Score Information
Grade:	6 out of a maximum of 6	
Feedback	Wow, great job! ;)	} → Feedback Comments

- We can **repeat the quiz** (if this option is enabled), simply by pressing “**Start again**” button.



# Moodle for Faculty



# Moodle Software

- Designed by faculty, for faculty
- Used at over 1900 sites worldwide
- Built to be lightweight, intuitive, and feature rich.





# Benefits for faculty

- Customizable
- Visual HTML editor
- Built-in Multimedia support (mp3, flash, video)

The screenshot shows a web-based assignment editor. At the top, there is a text input field labeled "Assignment name:" containing the text "New Assignment". Below this is a "Description:" section. To the left of the description area are three help links: "Write carefully" with a question mark icon, "Ask good questions" with a question mark icon, and "About the HTML editor" with a question mark icon. The main description area contains the text "In the html editor you can type text, add images, even audio and video files, all through a Word-like interface." Above the text area is a rich text editor toolbar with various icons for text formatting (bold, italic, underline, strikethrough), alignment, indentation, bulleted and numbered lists, link insertion, unlink, image insertion, table insertion, smiley, and other functions. At the bottom of the editor, a status bar shows the path "Path: body » p".

### Insert Image

Image URL:

OK

Alternate text:

Cancel

Layout

Alignment:

Border thickness:

Spacing

Horizontal:

Vertical:

Size

Width:

Height:

File Browser

<input type="checkbox"/>	<a href="#">this_course</a>	12 Jul 2004, 04:32 PM
<input type="checkbox"/>	<a href="#">arcataEducationalFarm1.sized.jpg</a>	16 Jul 2004, 03:42 PM
<input type="checkbox"/>	<a href="#">cdpkp1.jpg</a>	16 Jul 2004, 06:03 PM
<input type="checkbox"/>	<a href="#">flotsam.jpg</a>	16 Jul 2004, 03:45 PM
<input type="checkbox"/>	<a href="#">mona-lisa.jpg</a>	16 Jul 2004, 06:03 PM

action

Preview:



Selection:

Properties

Size: 6177      Type: image/jpeg





# Flexible Assessment Tools

- Timed Quizzes, Random Question Support, Cluster Support, Short Essay, etc.
- Multiple Quiz Import Formats.



# Multiple Quiz Import Formats

**Import Questions** ?

File Format:


Upload:

- aiken
- aon
- blackboard
- coursetestmanager
- gift
- missingword
- Multianswer
- qti

Michael Penney (Logout) | demo1



# Multiple Quiz Import Formats



Which LMS has the most quiz import formats?

- \*A) Moodle
- B) ATutor
- C) Claroline
- D) Blackboard
- E) WebCT
- F) Iliac



# In Context Help

Updating assignment in topic 1 ?


<http://learn.humboldt.edu/help.php?module=moodle&file=ric>

**Assignment name:** New Assign


**Description:** Times New Rc

Write carefully ?  
Ask good questions ?  
About the HTML editor ?


In the htm  
Word-like

**Inserting images** 


If you have images that are already published on a we accessible via a URL, you can include these images i texts using the "Insert Image" button.

**Inserting Tables** 

To add layout to your texts, you can use the "Insert T button in the toolbar.

**Inserting Links** 

To make a new link, first type the text that you want t Then select it and click the link button in the toolbar.





# Many Assessable Activities

- Glossary
- Journal
- Forums
- Workshop
- etc

# Online Presentations



**Flow**


1.1 Getting Started

**Lesson Menu**

- Glossary
- Main Menu
- Update Account
- Show Progress
- Course View
- Post Comment
- Logout
- ▶ Lesson introduction
- ▶ **The Tanzania experience**
- ▶ Environmental flows generate benefits for people and nature.
  - ▶ The price of not providing environmental flows should not be underestimated.
  - ▶ The river and drainage system should be considered in its context.
- ▶ Clear objectives and

**Back** **Next**

**1.1 Getting Started:**  
*The Tanzania experience*



Water has been overallocated from the dry Pangani basin, which flows from Mt. Kilimanjaro, the highest mountain in Africa.

Wetlands, hydropower generation, and extensive agricultural irrigation compete for the river's water.

Reference: [All you need to know of the Pangani River Basin - situation analysis.](#)

**Mr. Washington Mutuyoba**  
Ministry of Water and Livestock Development  
Government of the Republic of Tanzania  
Dar es Salaam



# Set Course Timings From One Place



Click the section's name to set display times for individual activities.

Commit Changes

		Day	Month	Year	Hour	Minutes
<a href="#">1 Course Information</a>	Available from:	18 ▾	September ▾	2004 ▾	00 ▾	00 ▾
	Deadline:	N/A ▾	N/A ▾	N/A ▾	00 ▾	00 ▾
<a href="#">2 Second Topic</a>	Available from:	N/A ▾	N/A ▾	N/A ▾	00 ▾	00 ▾
	Deadline:	N/A ▾	N/A ▾	N/A ▾	00 ▾	00 ▾
<a href="#">3 Third Topic</a>	Available	N/A ▾	N/A ▾	N/A ▾	00 ▾	00 ▾



# Grade Book With Nice Categorization

All Grades by Category

student	Final Exam (10.00%)			Homework (15.00%)			Quiz (20.00%)			Total		
	points(11)	raw %	weighted %	points(38)	raw %	weighted %	points(36)	raw %	weighted %	points(85)	raw %	weighted % (45)
Mihalek, Richard	-	0.00	0.00	13	34.21	5.13	26	72.22	14.44	39	45.88%	19.57%
McLain, Christie	-	0.00	0.00	6	15.79	2.37	25	69.44	13.89	31	36.47%	16.26%
Laine, Eli	-	0.00	0.00	3	7.89	1.18	19	52.78	10.56	22	25.88%	11.74%
Farley, Kevin	-	0.00	0.00	23	60.53	9.08	27	75.00	15.00	50	58.82%	24.08%
	-	0.00	0.00	22	57.89	8.68	18	50.00	10.00	40	47.06%	18.68%



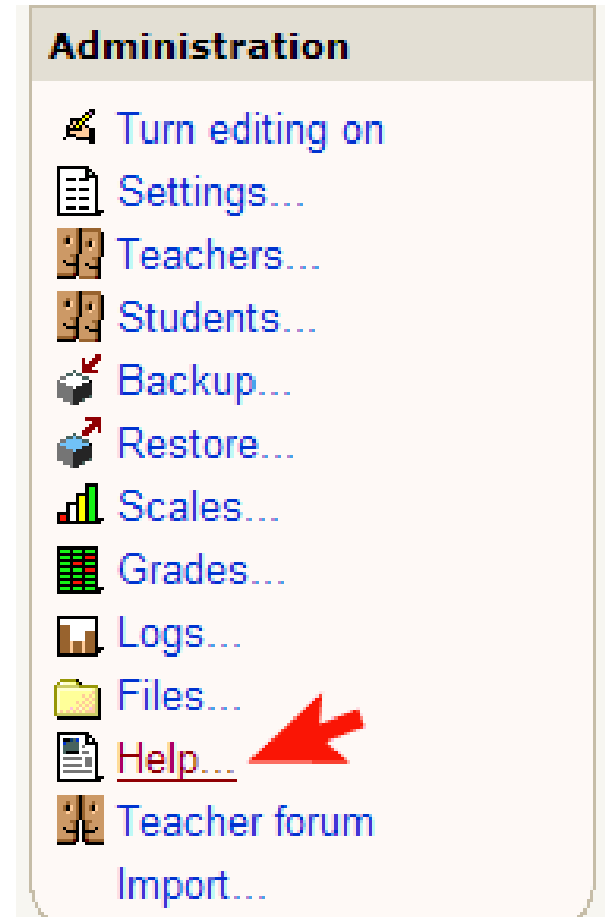
# Advantages

- More flexible assessment tools
- Timed assessments work
- More types of gradable activities
- Can be modified to meet specific education
- Custom languages
- No student limits
- Online shared folders
- Integrated ePortfolios

# Support



- Teacher manual under help
- Tools information and demonstrations in the Introduction to Moodle course
- Free training sessions or one-on-one sessions
- Free course development support



# Moodle 2.7 Overview

The slide features a background of orange grass. On the left, a large white circle contains the Moodle logo and the version number '2.7'. To the right, a dark grey box contains the text 'NEW RELEASE'. Below this, the word 'Overview' is written in large white letters. At the bottom, a thin white line separates the presenter information from the rest of the slide.

**moodle**  
2.7

NEW RELEASE

## Overview

---

Presented by: Martin Dougiamas (@moodler)  
Lead Developer, Moodle HQ



**Thank You**